



District Six MUSEUM

# A POWERFUL COMING-TOGETHER OF MEMORY, COMMUNITY AND CONNECTION.

HCC (Homecoming Centre) of the District Six Museum, is a multi-purpose eventing and education space and an amalgamation of arts, performance, learning & community.

It features purposeful spaces including the Star Theatre, the Avalon Auditorium, Bits 'n Pieces Galleries, Tafel, Workshop, Rooftop and an on-site cafe run by the team at Café Societi.

Each space has its own story to tell and like District Six itself, celebrates the rich culture and history before it.



District Six MUSEUM



STAR THEATRE

AVALON AUDITORIUM

TAFEL

BITS 'N PIECES GALLERIES

WORKSPACES

CAFÉ SOCIETI

# RATE CARD 2022

STAR THEATRE	AVALON AUDITORIUM	TAFEL	BITS 'N PIECES GALLERIES	WORKSHOP	ROOFTOP
A beautifully appointed theatre can host up to 320 pax seated with outstanding amenities and technical capacity. Suited to theatrical productions, live music, live streams/ hybrid presentations, screenings and product launches.	A gothic themed auditorium that can hold up to 120 pax seated situated on the first floor of the HCC, and is ideal for intimate talks, movie screenings, comedy, music performances and panel discussions. Live stream ready.	A beautiful hall with a small raised stage that is ideal for a number of events and functions from mass book sales, to supper clubs and everything else in between, wrapped in the history and legacy of District Six. Easy access from Bits 'n Pieces and Cafe Societi.	Two floors of gallery space that can be configured for any type of event or function from art exhibitions, breakaway rooms, dance rehearsals and more. Separate access from Buitenkant St with ground level reception, can easily flow into Tafel, the Workshop, Theatres & Cafe Societi.	A blank canvas with multiple rooms enclosed that can operate for an event independently or as part of a larger event combining multiple spaces. Your imagination is the only limitation when making this space work for you.	The ideal open space suited for shoots, private functions and private launches with unparalleled views of the the inner city and plenty of versatility.
<b>CAPACITY</b> 320 seated	<b>CAPACITY</b> 120 seated	<b>CAPACITY</b> Approx 150 standing Approx 100 seated	<b>CAPACITY</b> Gallery 1: 50 standing Gallery 2: 50 seated & 100 standing	<b>CAPACITY</b> Approx 60 seated Approx 100 standing	<b>CAPACITY</b> Approx 100 pax standing Approx 40 pax seated

## RATES

**FILM: R30,000.00 ex VAT** | 12 hours / up to 65 pax

**STILLS: R20,000.00 ex VAT** | 10 hours / up to 25 pax

**VENUE MANAGER: R3,000.00 ex VAT** | 10 hours and R300 ex vat per hour or part thereof overtime\* (\*Overtime represents 10% of venue hire for every hour over the allocated time)

**SECURITY: Included in current rates** | Additional security charges will apply based on brief

# STAR THEATRE



# STAR THEATRE

## SOUND

### CONTROL:

- Midas Pro2 Digital Mixing Console
- 2 x Midas DL153 Stage Box
- 1 x Dante Card for multitrack recording
- 4 x Shure URD Dual Receiver

### MAIN PA:

- 18 x Meyer Lina
- 6 x Meyer M1D sub

### PA FILLS:

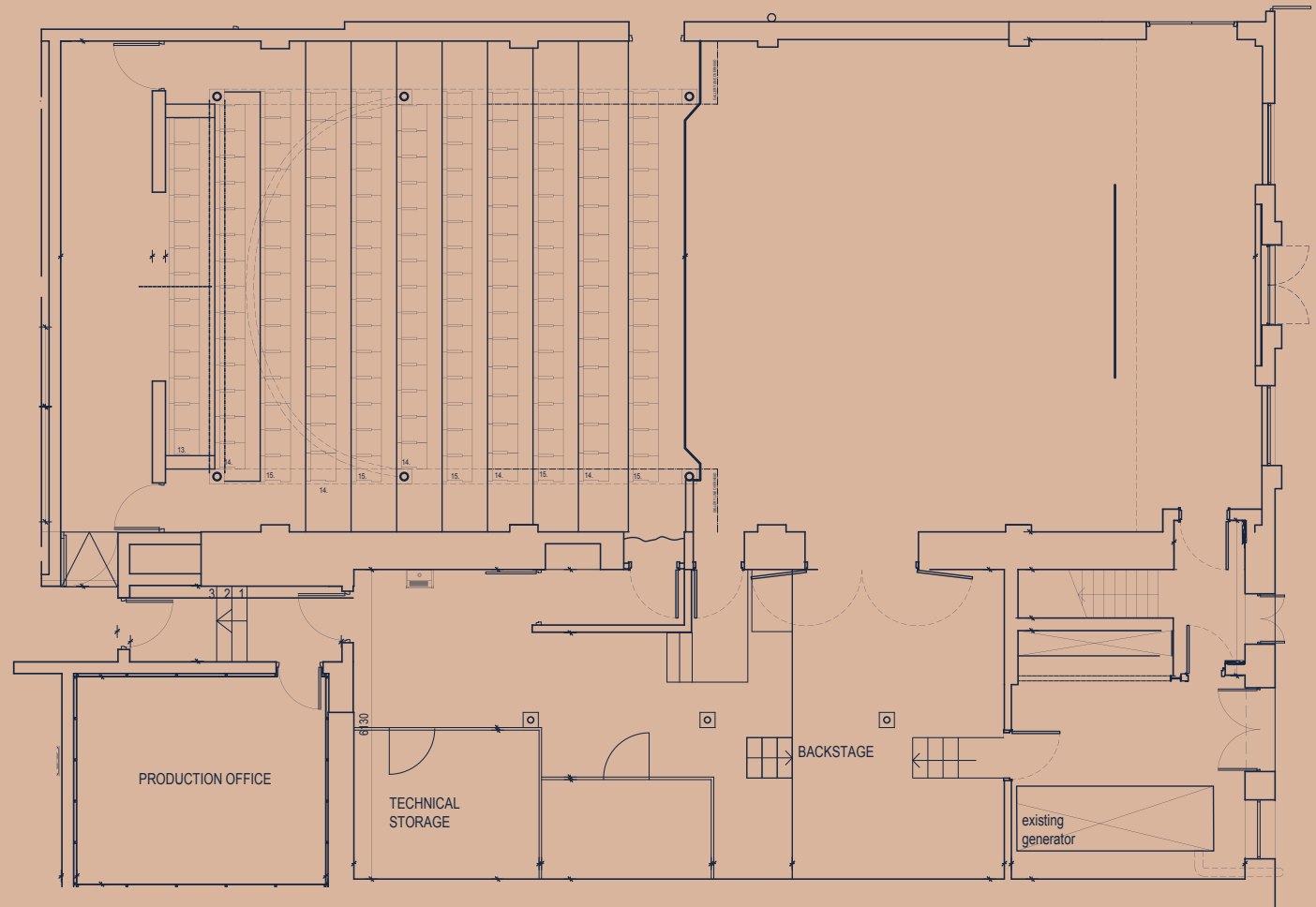
- 4 x Meyer UPjunior

## ATMOSPHERIC

- 1 x Martin K1 Hazer
- 1 x Martin JEM Compact Hazer Pro
- 1 x Martin JEM ZR44 Smoke Machine

## AV

- 1 x Christie LHD700



# STAR THEATRE

## LIGHTING

### CONTROL:

1 x ETC Gio Lighting Console

### FIXTURES:

7 x Martin Mac Quantum Spot

6 x Martin Mac401 Dual

4 x Martin Mac Aura

4 x Martin RUSH PAR RGBW

6 x ADB F201 2K Fresnel

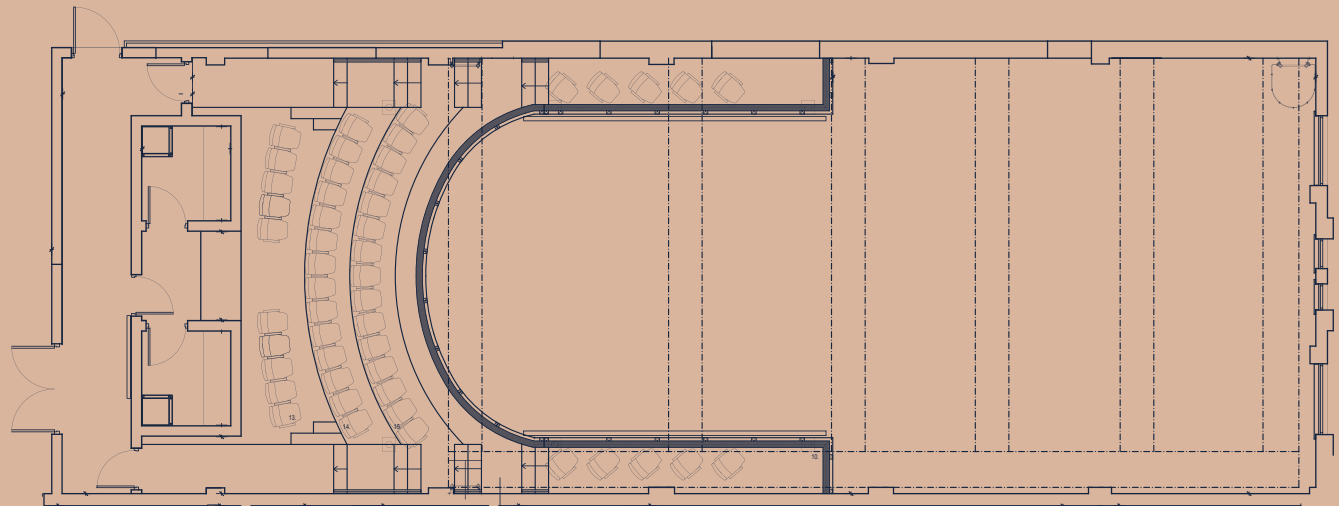
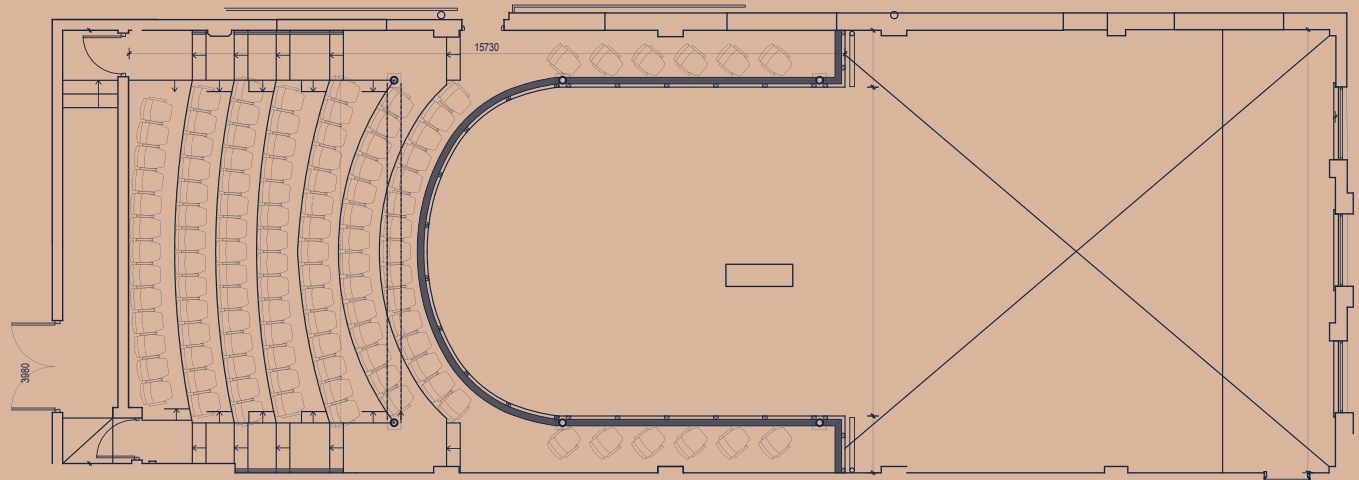
1 x ETC Source4 10°

6 x ETC Source4 14°

12 x ETC Source4 19°

18 x ETC Source4 26°

6 x Selecon Zoom Profile



# AVALON AUDITORIUM





# AVALON AUDITORIUM

## SOUND

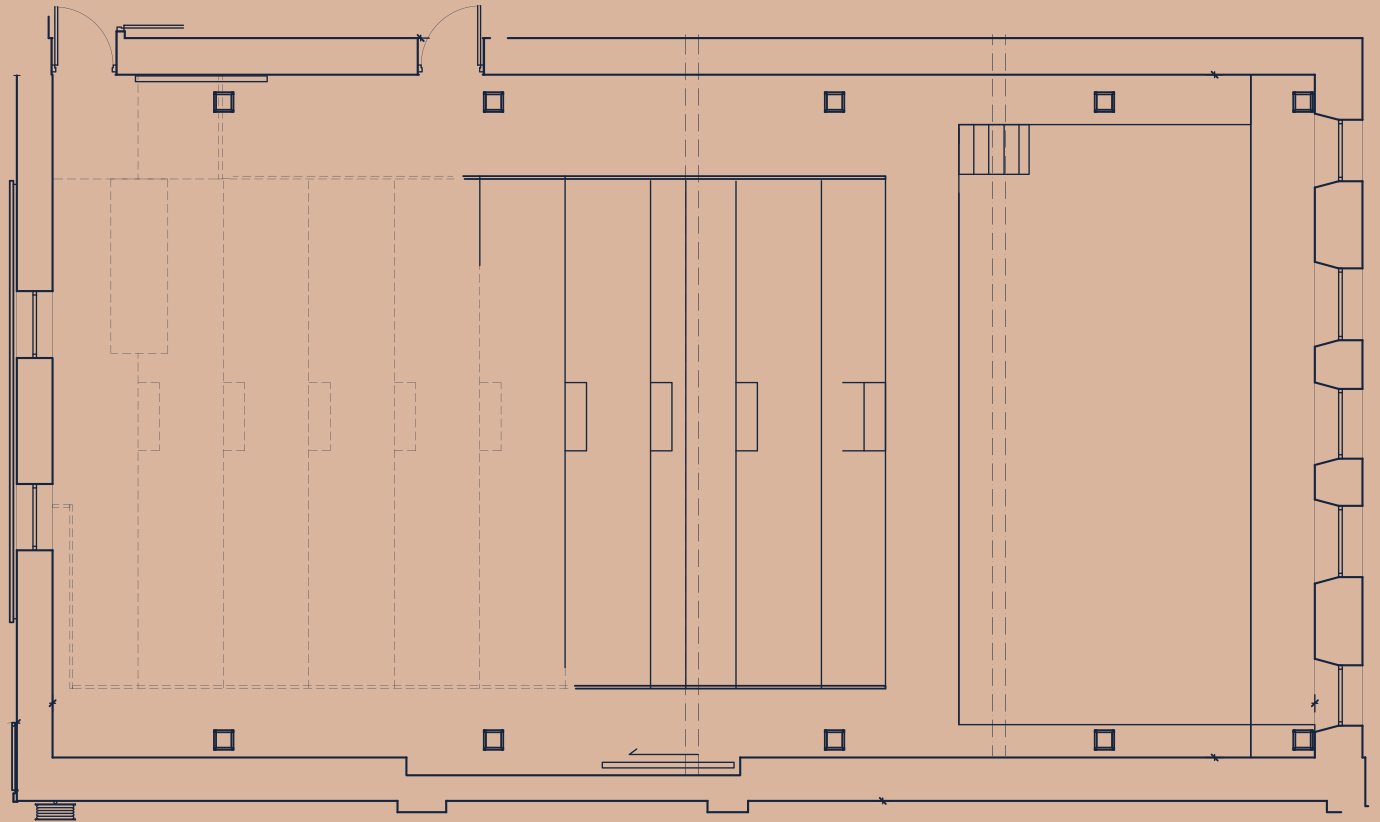
1 x Mackie 16 Channel Analog  
Mixing Console  
4 x Proel 12" Full-Range Speakers  
2x Proel 15" Subwoofers

## LIGHTING

1 x Compulite Vector Violet  
4 x Martin Mac Aura  
18 x ADB DW105 1K Profile  
23 x ADB F101 1K Fresnel  
10 x Par64

## ADDITIONAL

1 x Le Maitre MVS Hazer  
1 x Christie LX700



TAFEL



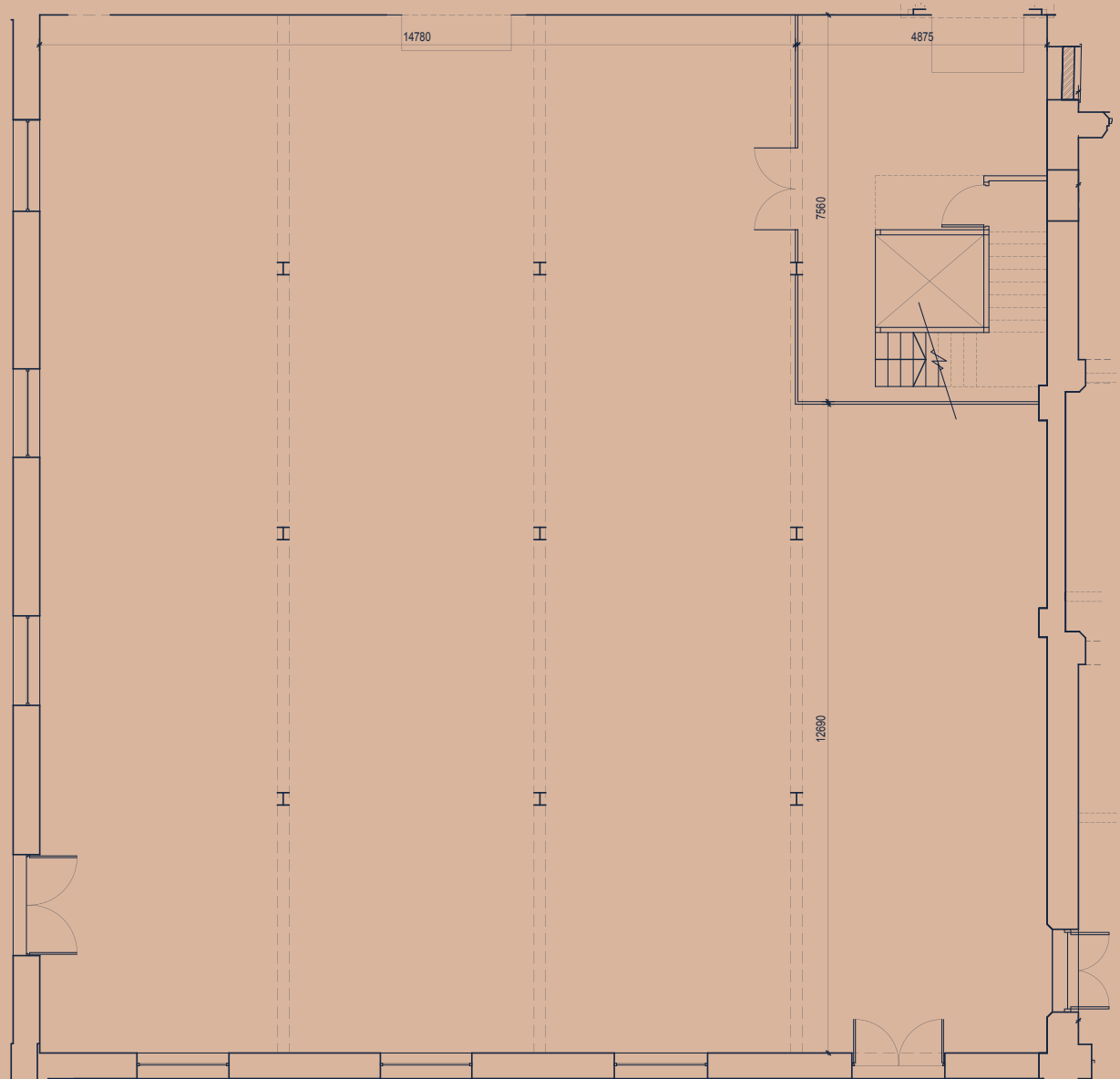
# TAFEL

## CAPACITY

- 20m x 15m = 300sqm
- Approx 150 standing
- Approx 100 seated
- Small stage 2.5m x 1.5m

## DESCRIPTION

A beautiful hall with a small raised stage that is ideal for a number of events and functions from mass book sales, to supper clubs and everything else in between, wrapped in the history and legacy of District Six. Easy access from Bits 'n Pieces and Cafe Societi.



# BITS 'N PIECES GALLERIES

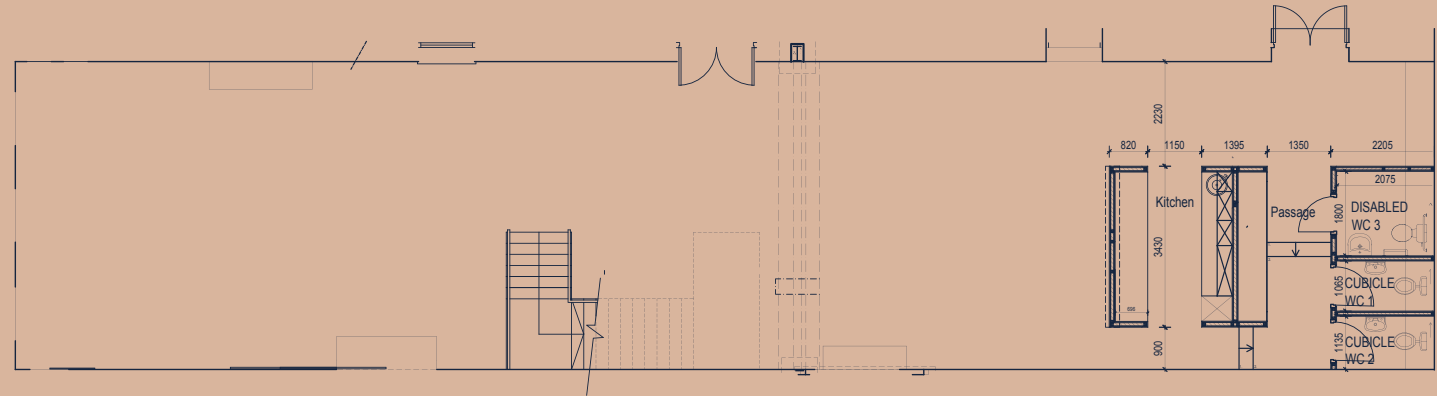


# BITS 'N PIECES GALLERIES

## GALLERY 1

### GROUND FLOOR:

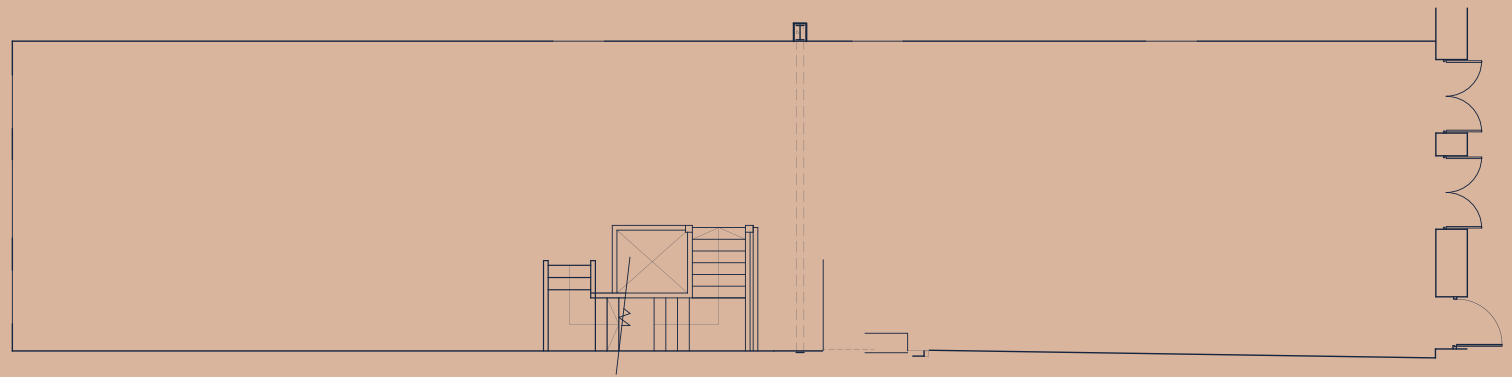
- Direct access to Tafel
- 6.5m x 30m = 198sqm
- Approx 50 standing
- Small kitchenette for catering
- 4 x toilets
- Own access point to Buitenkant Street



## GALLERY 2

### FIRST FLOOR:

- Staircase to Tafel and Bits 'n Pieces Ground Floor
- Disabled access via elevator with ramps
- 6.5m x 30m = 200sqm
- Approx 50 seated
- Approx 100 standing



# WORKSHOP



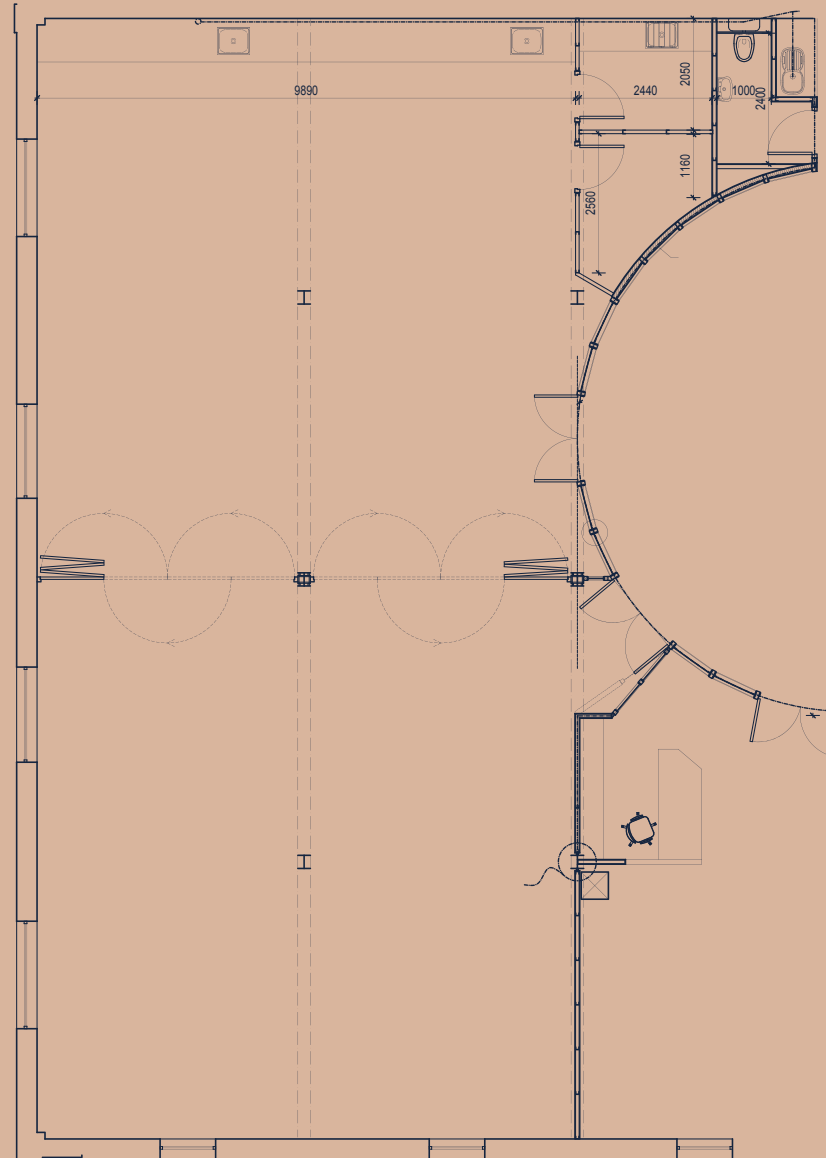
# WORKSHOP

## QUICK FACTS

- Access via staircase from Tafel and Bits 'n Pieces 1st Floor
- Disabled access via elevator
- Size: 20m x 10m = 200sqm
- Approx 60 seated
- Approx 100 standing

## DESCRIPTION

A blank canvas with multiple rooms enclosed that can operate for an event independently or as part of a larger event combining multiple spaces. Your imagination is the only limitation when making this space work for you.



# CAFÉ SOCIETI

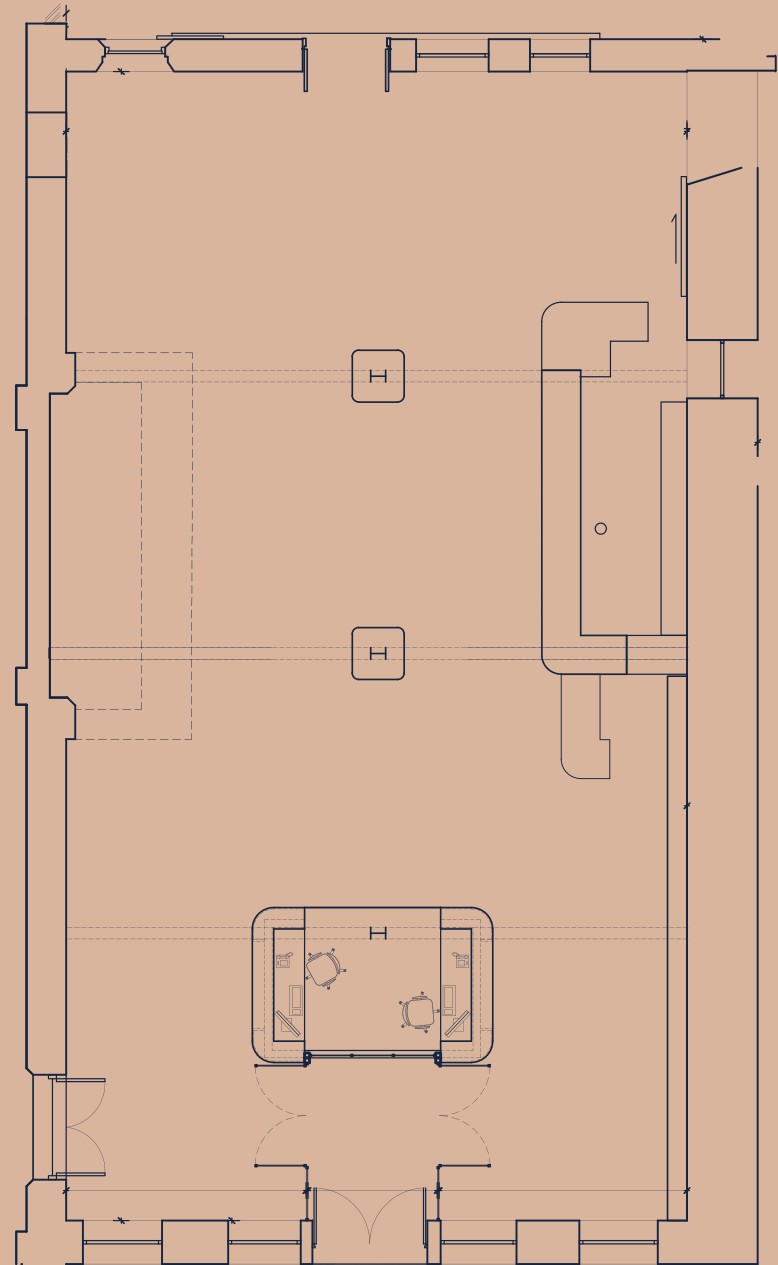




# CAFÉ SOCIETI

## QUICK FACTS

- Fully functional café and preferred catering supplier
- Access from Calendon Street
- Access to Tafel
- Disabled friendly
- Size: 17m x 9m = 160sqm
- Space available in multiple configurations upon request from Café Societi



# ROOFTOP

## QUICK FACTS

- Ideal for shoots, product launches and intimate functions with one of the most iconic views in South Africa.
- Access by stairs only, so unfortunately not disabled friendly.
- Equipped with rigging points for any number of temporary structures.
- Size: 100sqm
- Approx 100 pax standing
- Approx 40 pax seated



# CONDITIONS TO NOTE

1. Theatre rates include basic PA and lighting and 1 x engineer. Additional tech requirements are for the cost of the client.
2. All catering in venue to be supplied by Café Societi unless mutually agreed otherwise.
3. Rates reflected are a guideline and as such do not constitute a formal quote. Please share your detailed shoot brief and budget guideline with [Nina@nvdproperty.co.za](mailto:Nina@nvdproperty.co.za) and we will try our best to accommodate each job & budget.



District Six MUSEUM

## HOMECOMING CENTRE

Email: [Nina@nvdproperty.co.za](mailto:Nina@nvdproperty.co.za)

Website: [homecomingcentre.co.za](http://homecomingcentre.co.za)

Instagram: [@homecomingcentre](https://www.instagram.com/homecomingcentre)



CAFÉ SOCIETI



**neighbourgood**